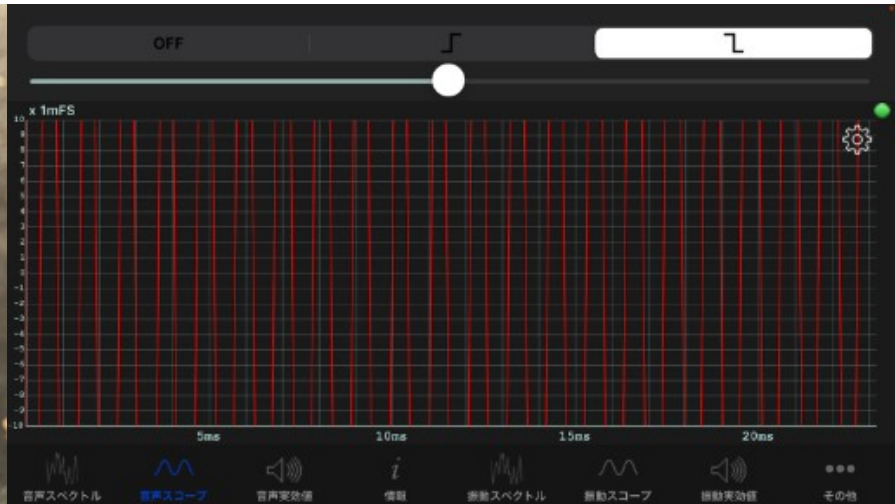


alto mouthpiece Only -Amplitude waveform comparison.
Yanagisawa 3



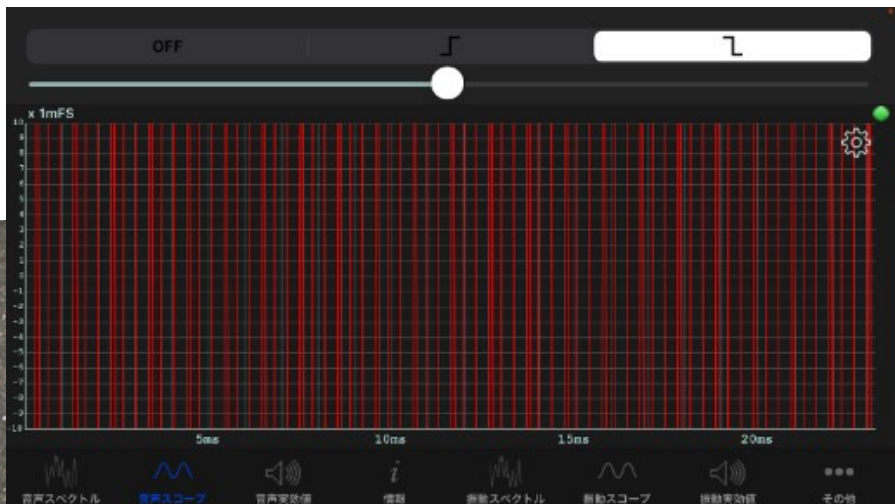
Normal Ligature Selmer



2000 times Reed vibration / 1sec.



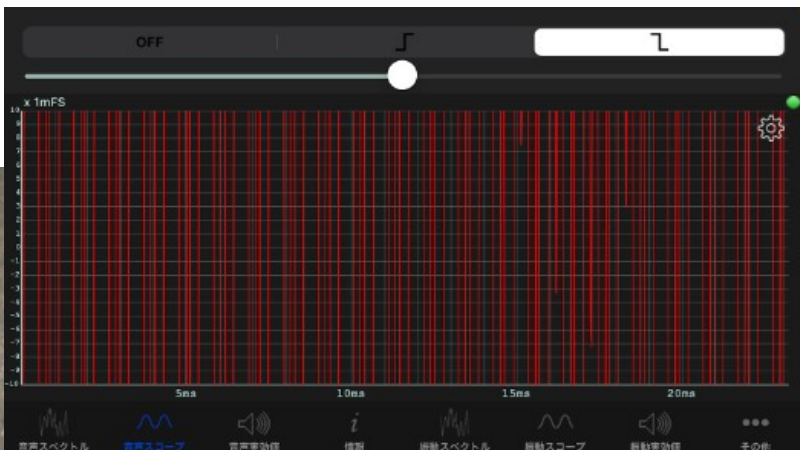
C-shaped Ligature 1.310Z



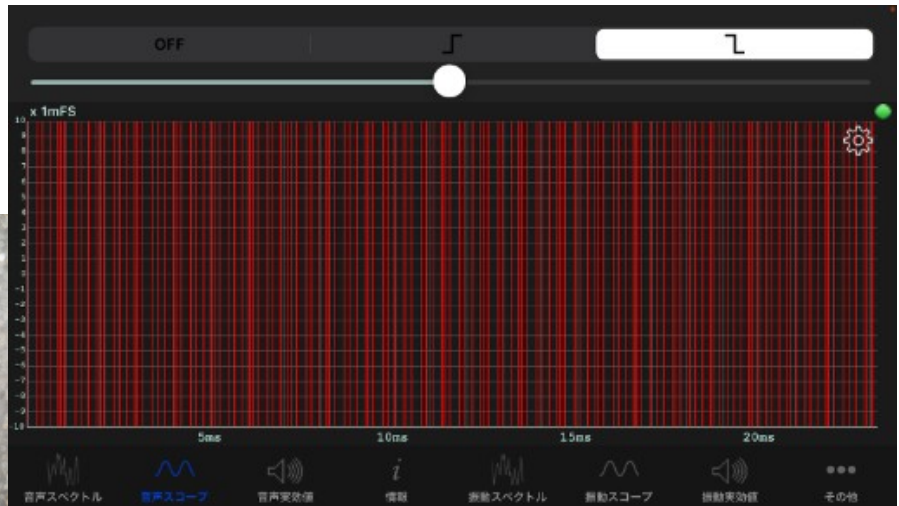
3900 times Reed vibration / 1sec.



1,97in thick barrel-shaped ligature 0,92oz



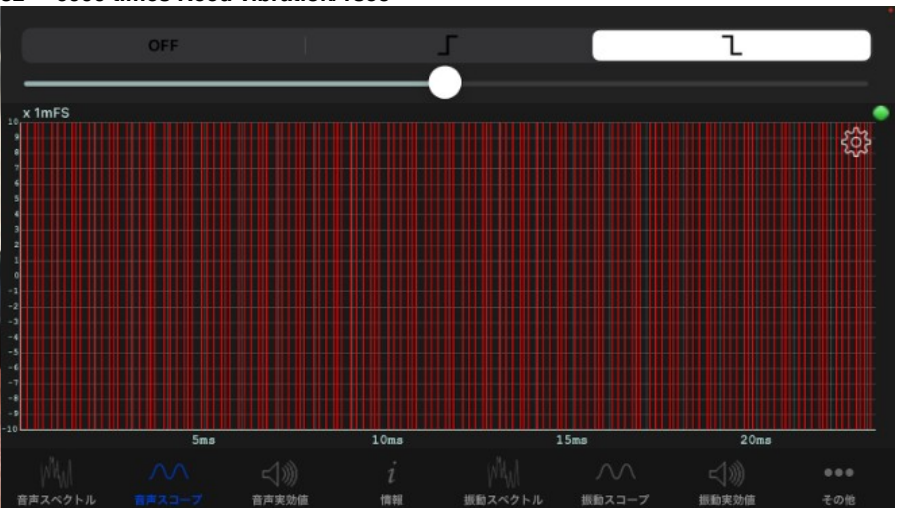
3900 times Reed vibration / 1sec.



1,97in thick barrel-shaped ligature 0,92oz
+ 0,19in thick copper 0,63oz total 1,55oz

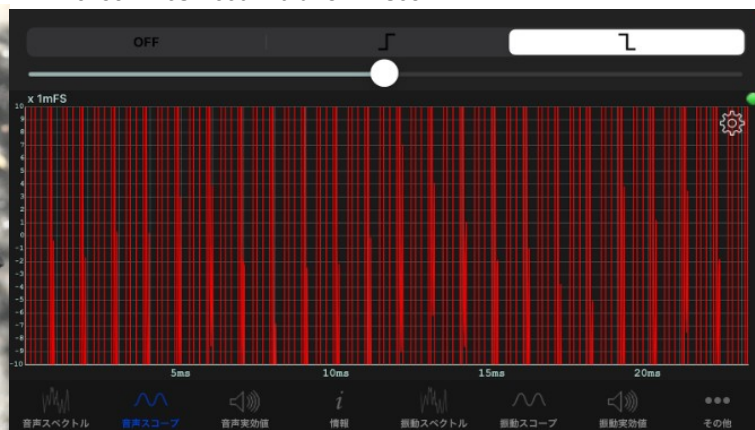
5650 times Reed vibration / 1sec.

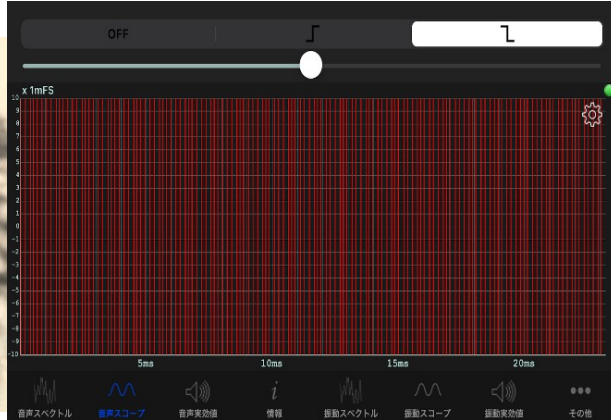
C-shaped ligature with magnet 1,20oz 6000 times Reed vibration/1sec



C-shaped ligature with magnet 1,20oz
+ 4 magnets 0,99oz total 2,19oz

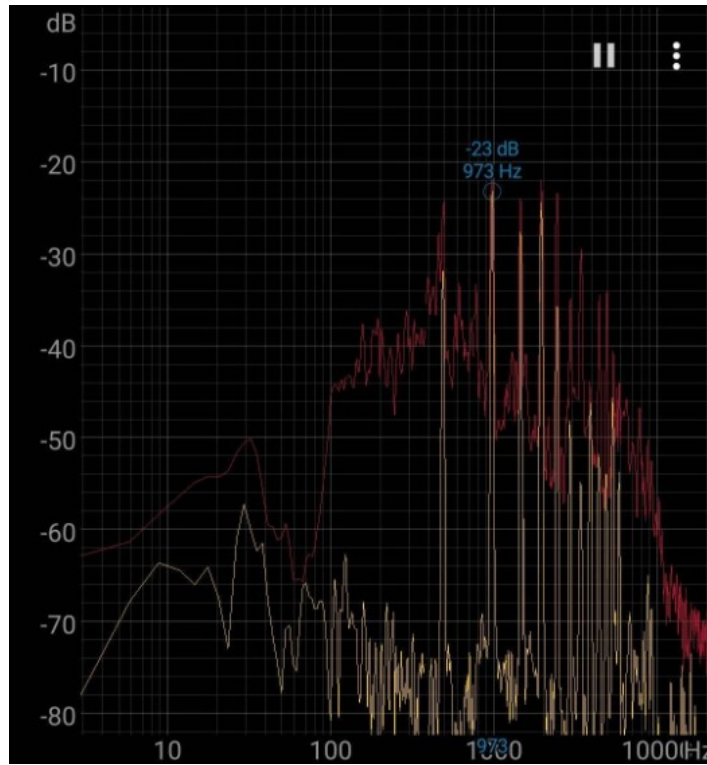
6400 times Reed vibration / 1sec.





eccentric ligature 1,16oz 6050 times Reed vibration / 1sec.

Soprano Sax



Red wire 1,97 thick barrel-shaped ligature 0,67oz →
 ← White wire normal ligature